

All dimensions to be checked on site. Figured dimensions take preference over scaled dimensions. Any errors or discrepancies to be reported to the Architects. This drawing may not be edited or modified by the recipient.

Copyright and ownership of this drawing is vested in RKD Architects, whose prior written consent is required for its use, reproduction or for publication to any third party. All rights reserved by the law of copyright and by international copyright conventions are reserved to RKD Architects and may be protected by court proceedings for damages and/or injunctions and costs.

RKD Architects' Quality Management Systems are certified to ISO 9001:2015.

Notes:

UNIT TYPE M5 (UNIVERSAL DESIGN UNIT)

- Plot Curtilage
- 3 Bed 2 Storey Maisonette
- 3 Bed Upper Unit Unit See Drawing A1525

MATERIALITY KEY

- (A) Selected Brick Finish
- (B) Selected Render Finish
- (C) Roofing Tile
- (D) Stone Capping
- (E) Coloured Brick Detail
- (F) Selected Brick Soldier Course
- (G) Opaque Glass
- (H) Solar Panel
- (I) Aluminium Finished Double Glazed Windows
- (J) External Bin Store
- (K) Selected Brick Pattern Detail
- (L) Roof Window
- (M) Selected Finish Cladding Board
- (N) Timber Garden Fence

NOTE: See Architectural Design Statement for selected colours and materials

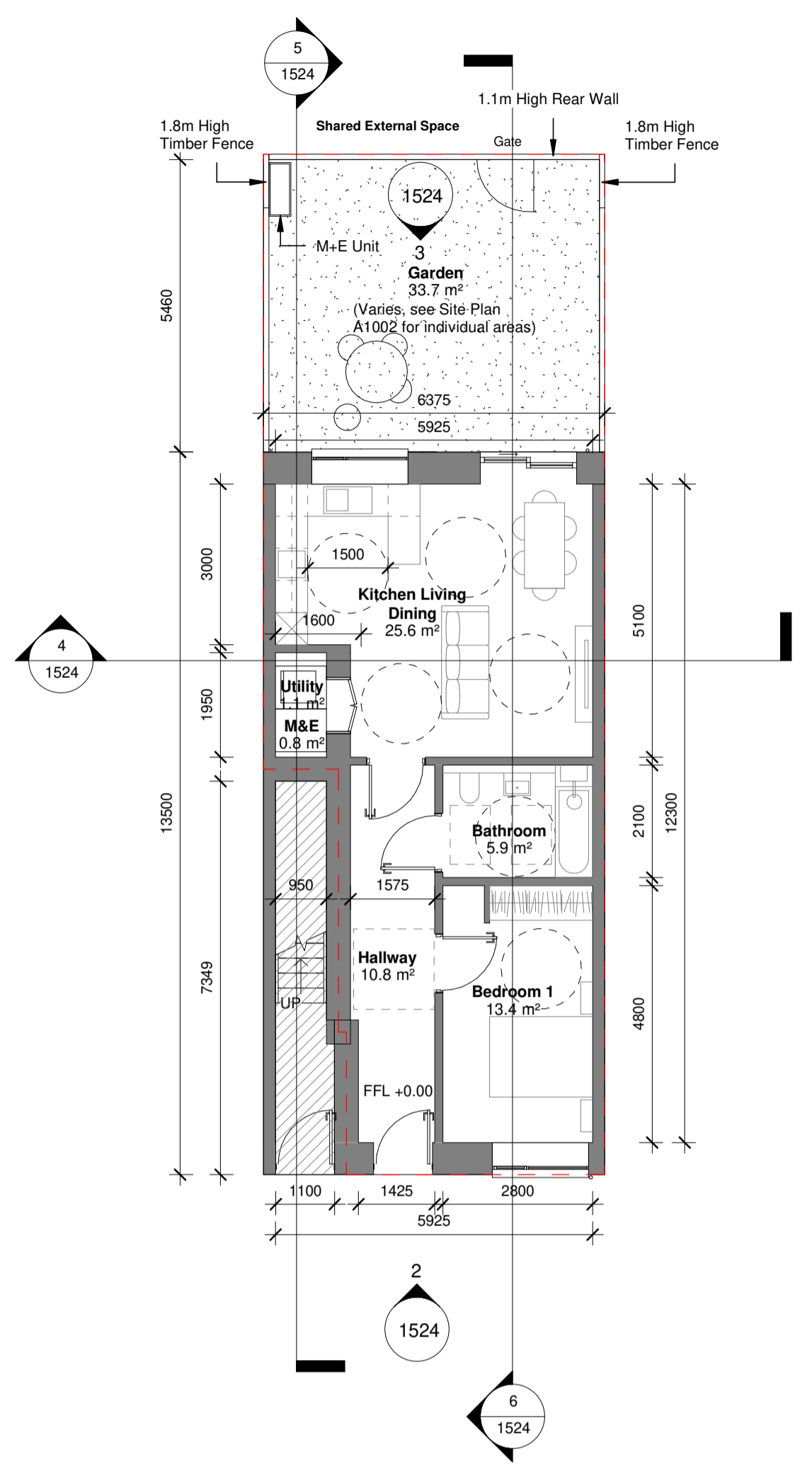
NOTE: Side elevations and gable ends may vary. See site plan and architectural design statement.

M5 - 1 Bed, 2 Person Terrace Maisonette Lower		
Name	Target Areas (m ²)	Proposed Areas (m ²)
Kitchen Living Dining	23.0 m ²	25.6 m ²
Bedroom 1	13.0 m ²	13.4 m ²
Gross Floor Area	45.0 m ²	62.5 m ²
Internal area excluding stair void	45.0 m ²	62.5 m ²
Aggregate Living	23.0 m ²	25.6 m ²
Private Amenity	5.0 m ²	33.7 m ²

Based on the Sustainable Urban Housing Design Standards for New Apartments Guidelines (Dec 2020)

Entrance, Bedroom, Kitchen, Living, Dining and Bathroom spaces all designed according to Universal Design Guidelines for Homes in Ireland (2015).

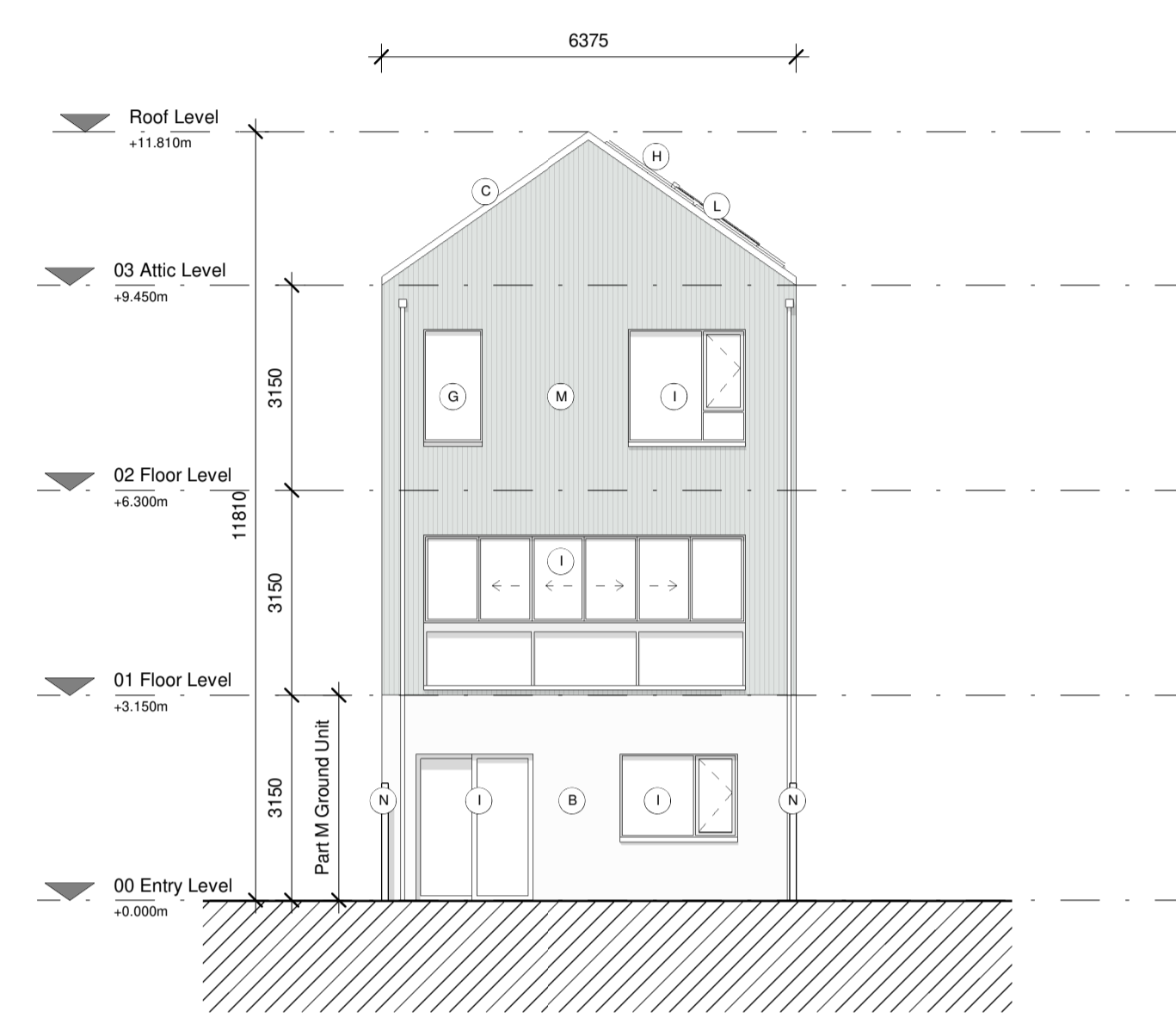
Note: 1500mm turning circles



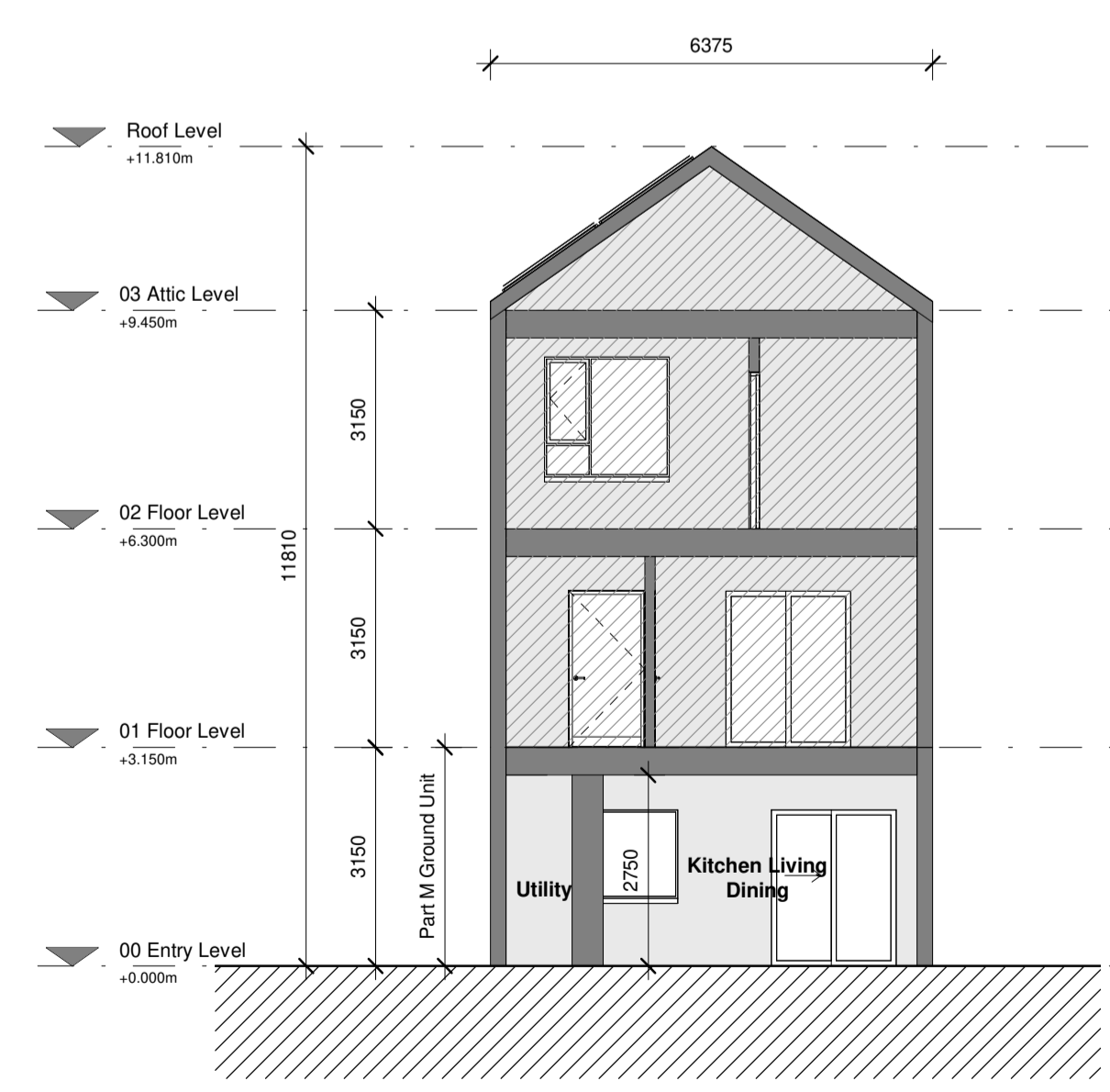
1 Ground Floor (Part M Lower Unit)
1 : 100



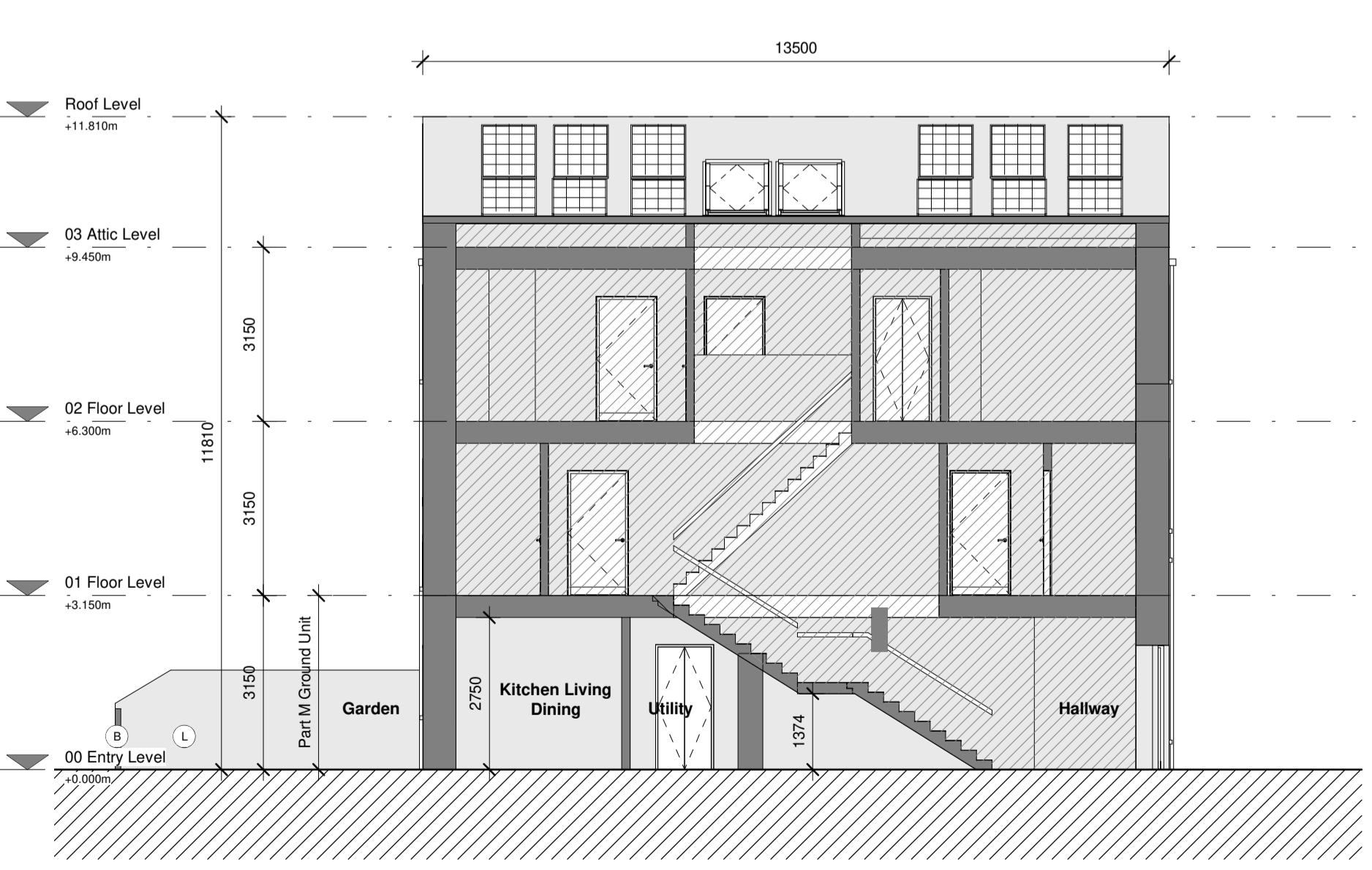
2 Front Elevation
1 : 100



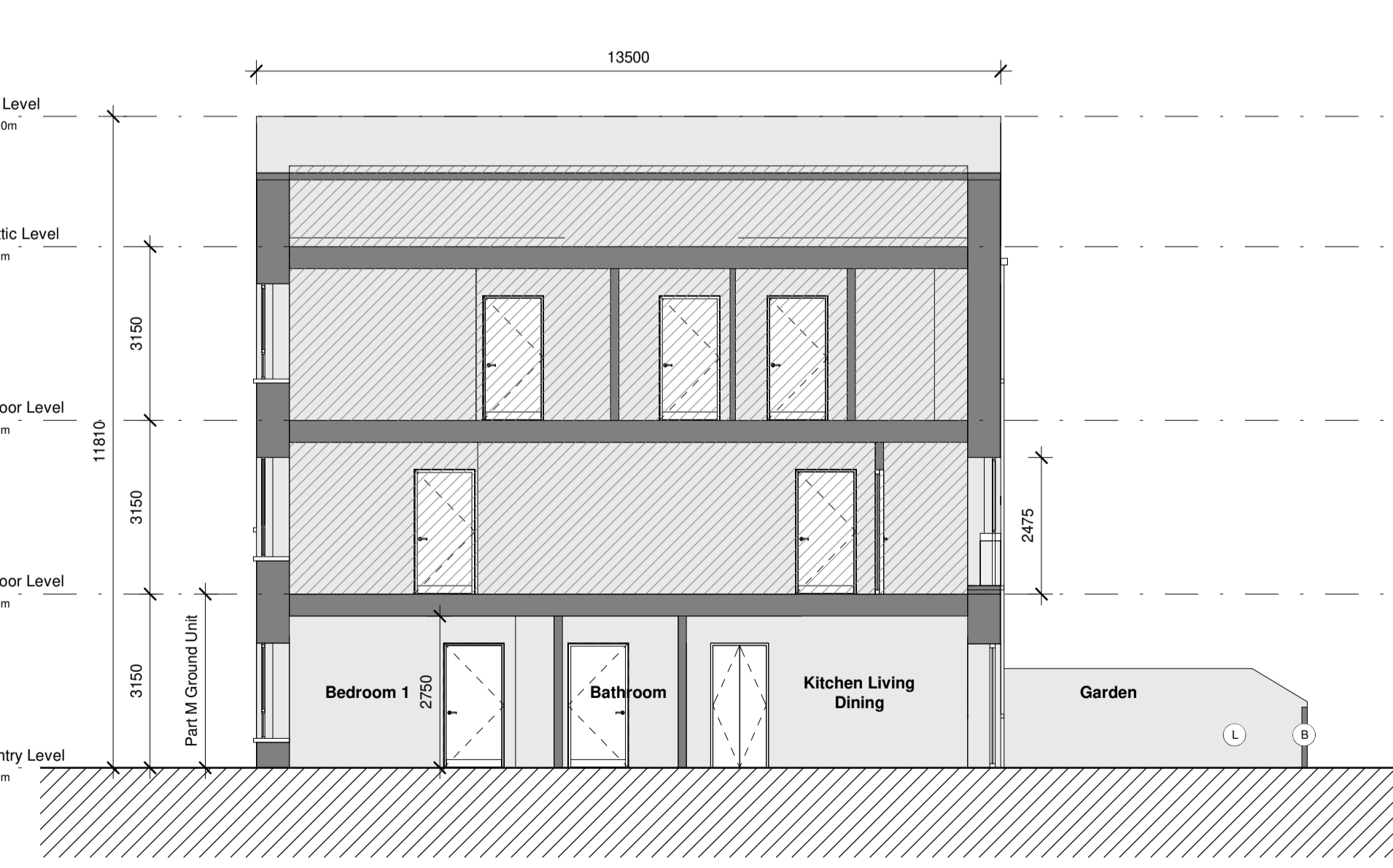
3 Rear Elevation
1 : 100



4 Section A
1 : 100



5 Section B
1 : 100



6 Section C
1 : 100

Rev.	Date	Description
P1	MAY 2022	Planning Submission

Beo Properties Ltd

STATUS **PLANNING**

PROJECT **Ratoath South SHD**

PROJECT ADDRESS **Ratoath South, Co. Meath**

DWG TITLE **Maisonette 3-Storey Lower Unit**

DWG NO. **21088-RKD-ZZ-ZZ-DR-A-1524**

REV.	STATUS	PROJECT NO.
P1	A3	21088
DATE	MAY 2022	DRN JB
		CHK DC

